



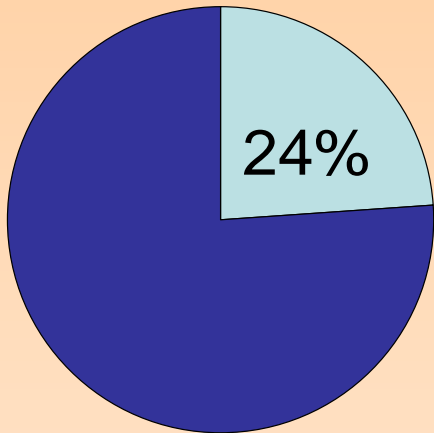
Association of Bay Area Governments

Bay Area Jobs Landscape

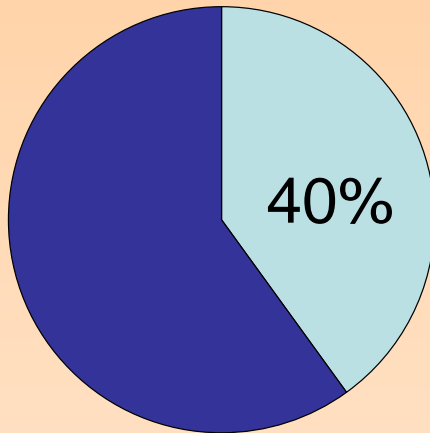
FOCUS Forum
October 7, 2010

Jobs and Transportation

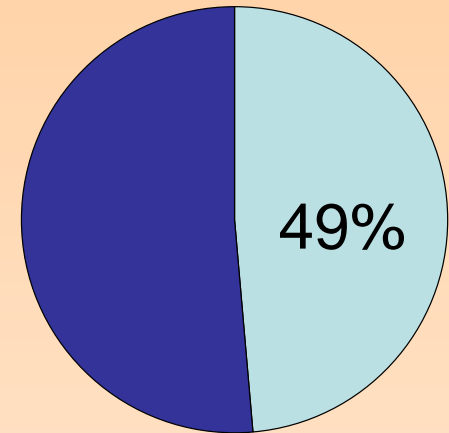
The commute:



Total Trips



Vehicle Miles Traveled

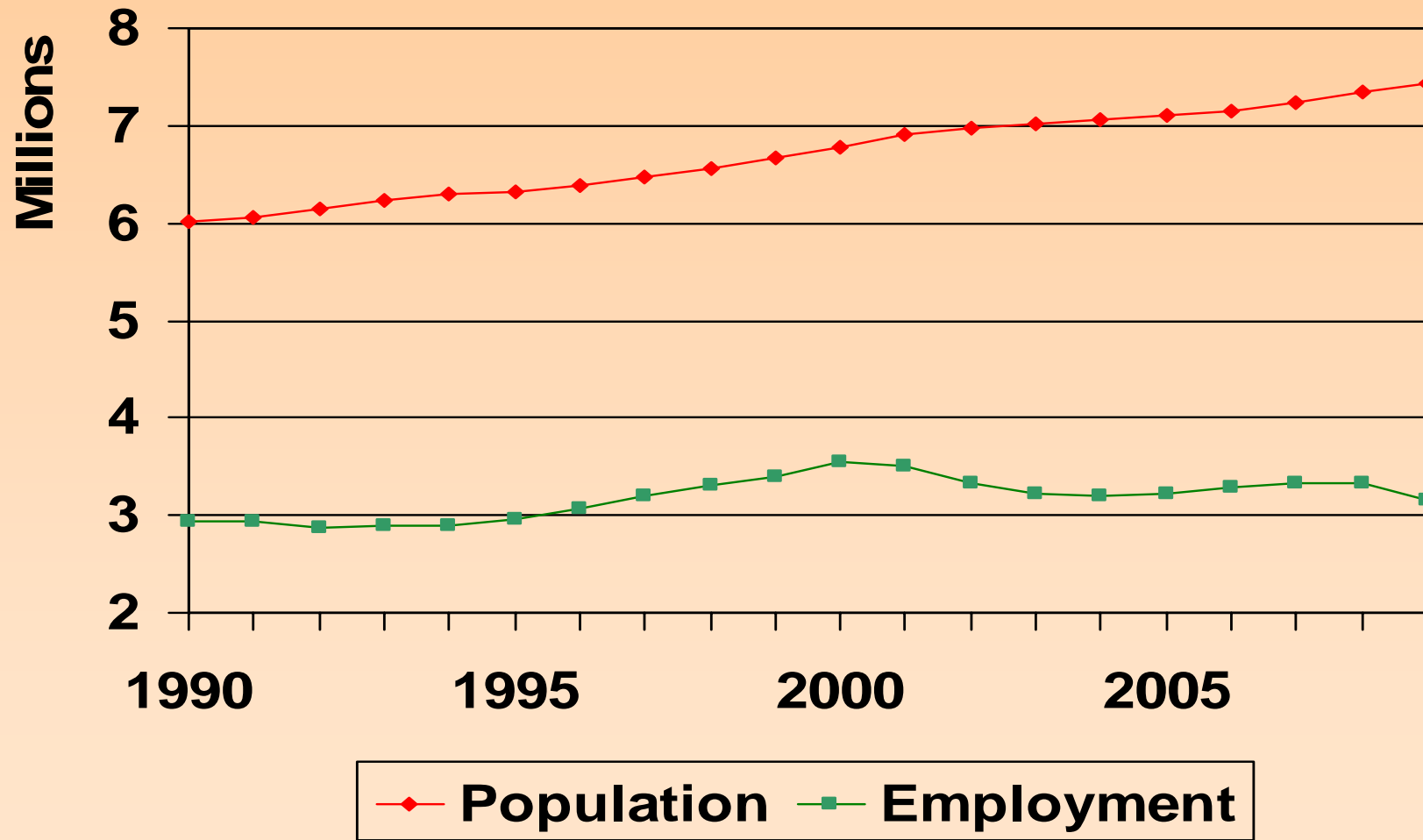


Transit Trips

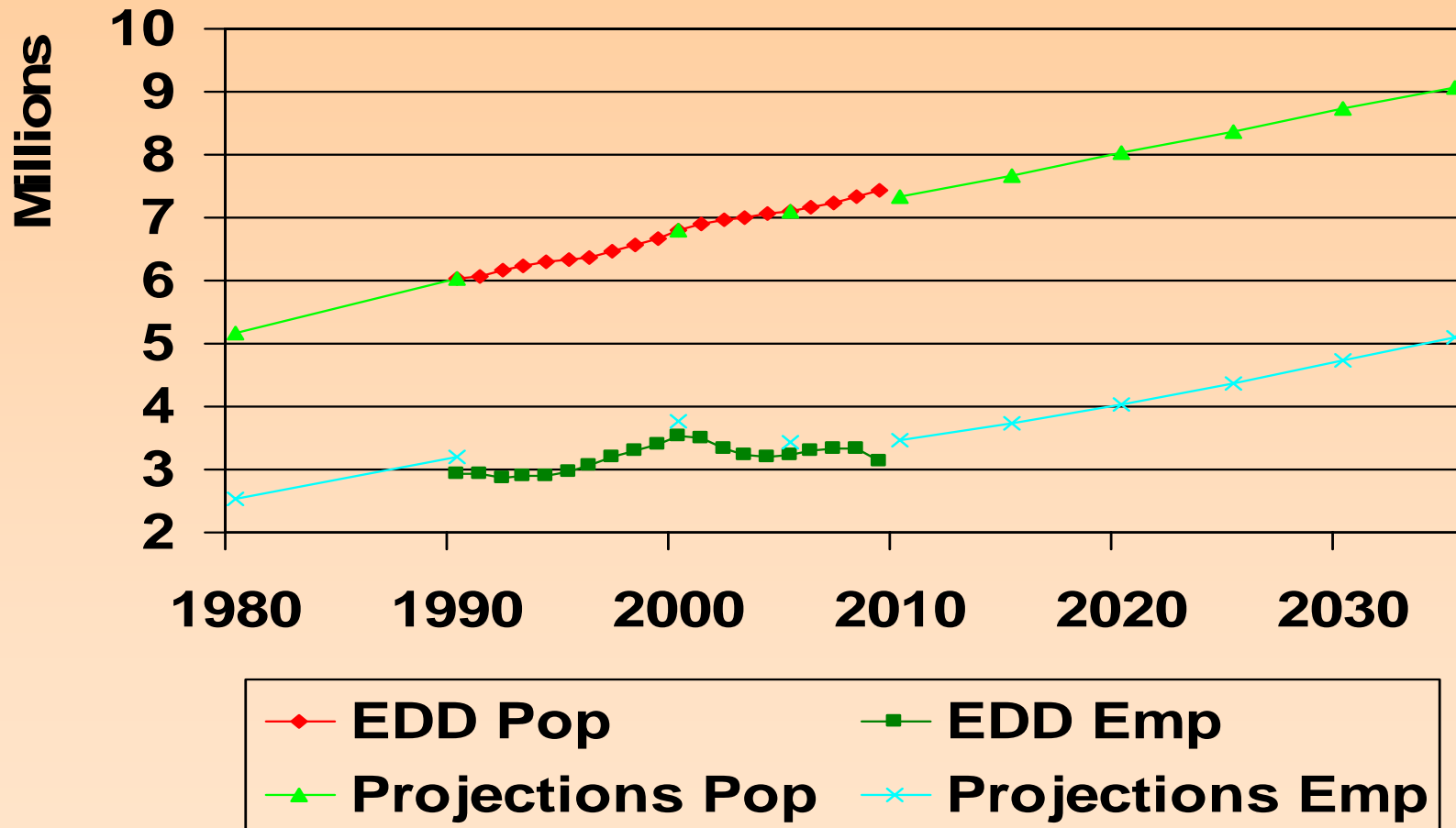
Regional Employment Change

What does the current job picture look like? What sectors have been growing? Where has growth been occurring?

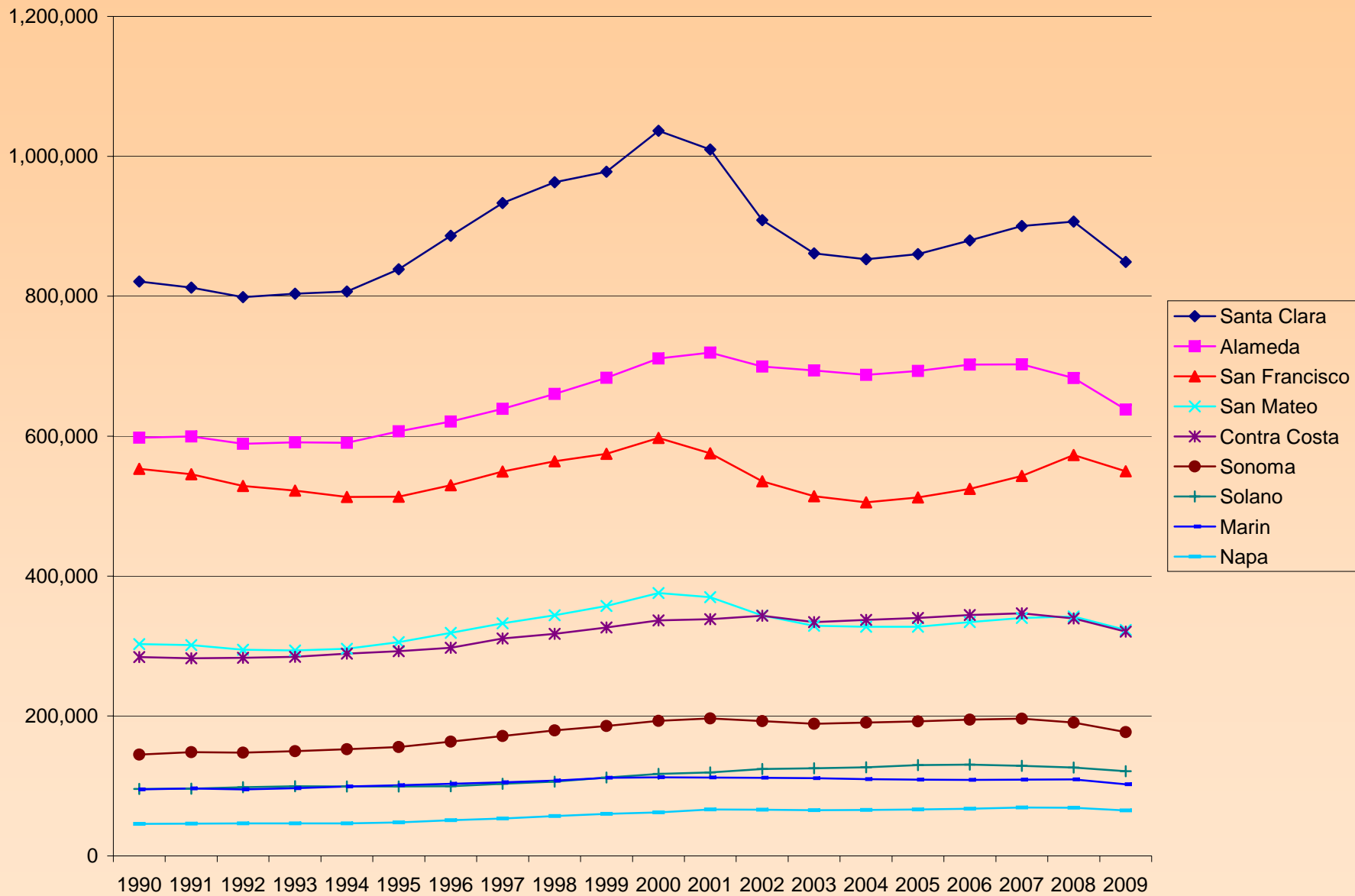
Bay Area Population and Employment



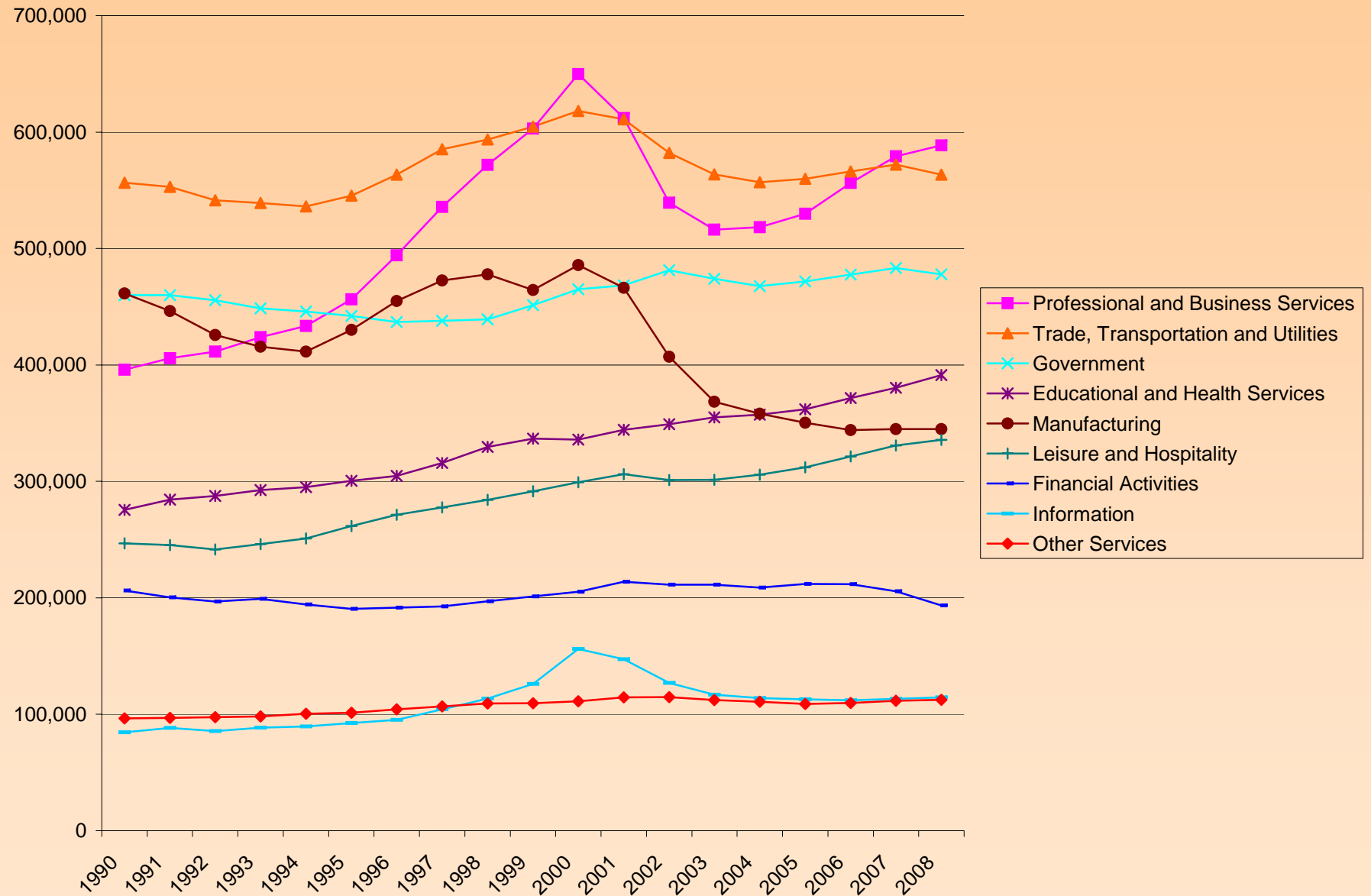
Population and Employment Projected



Employment by County

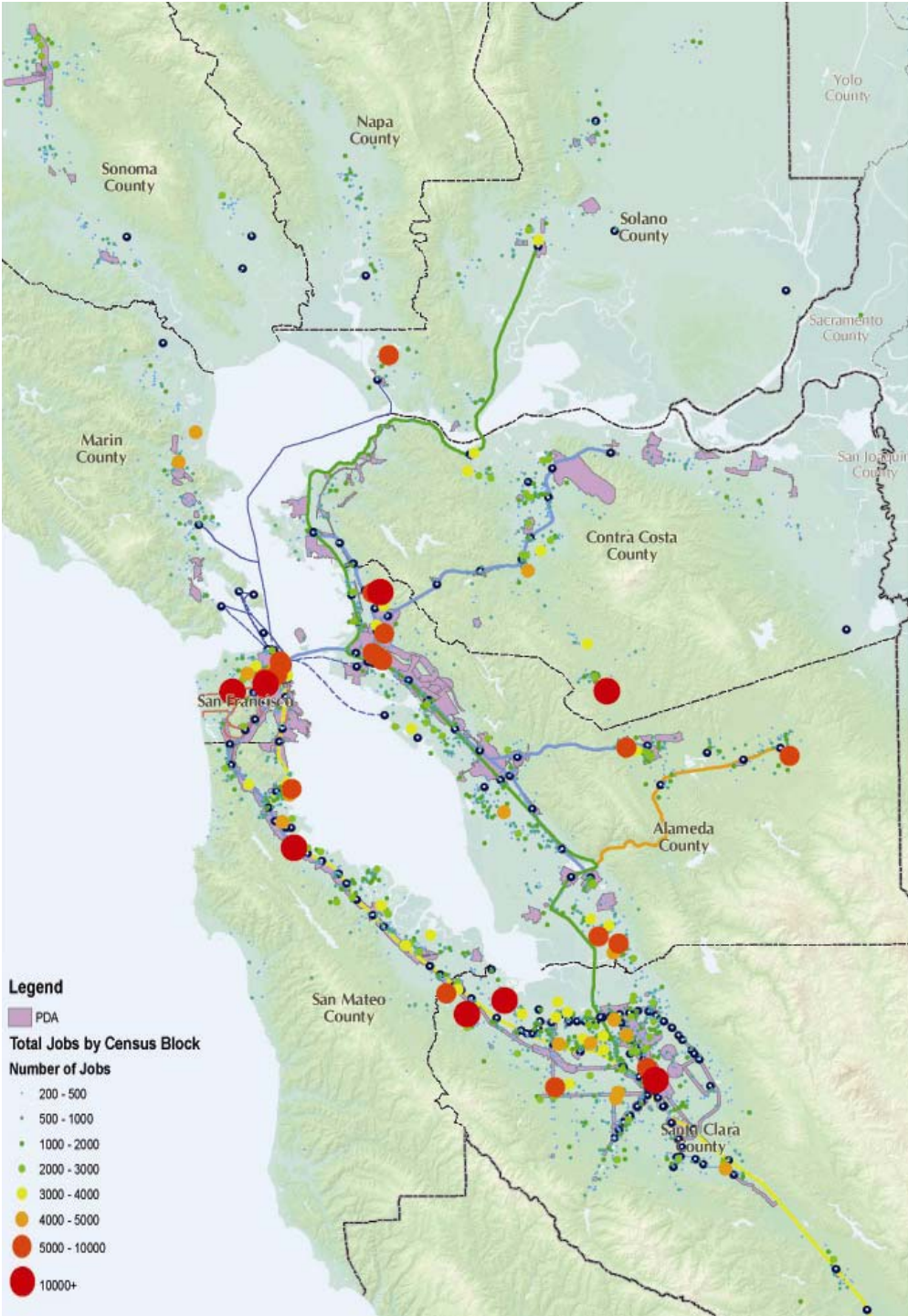


Regional Employment by Sector



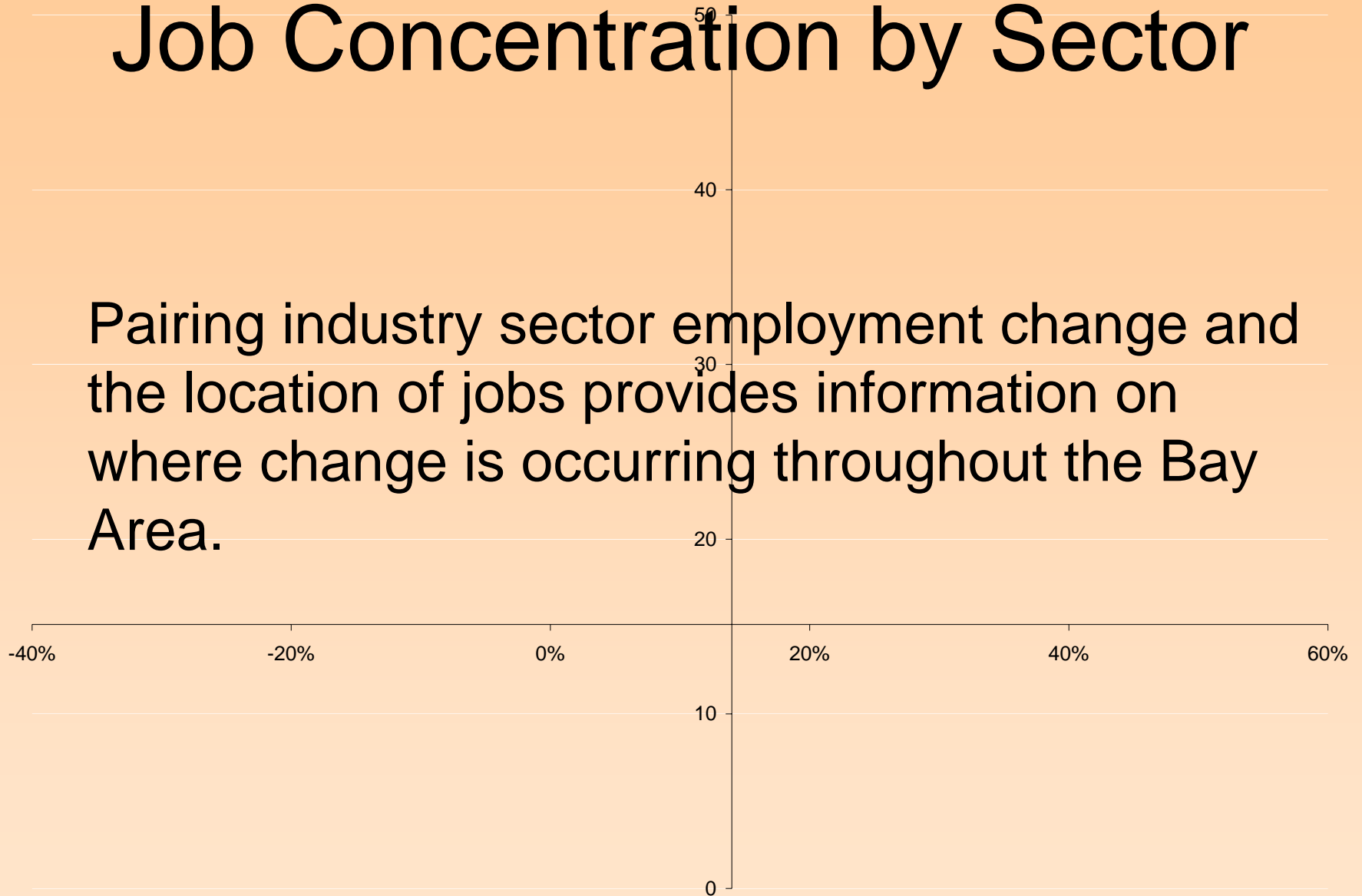
Job Location

Jobs are scattered through many parts of the Bay Area; however, there are relatively few large-scale employment centers.

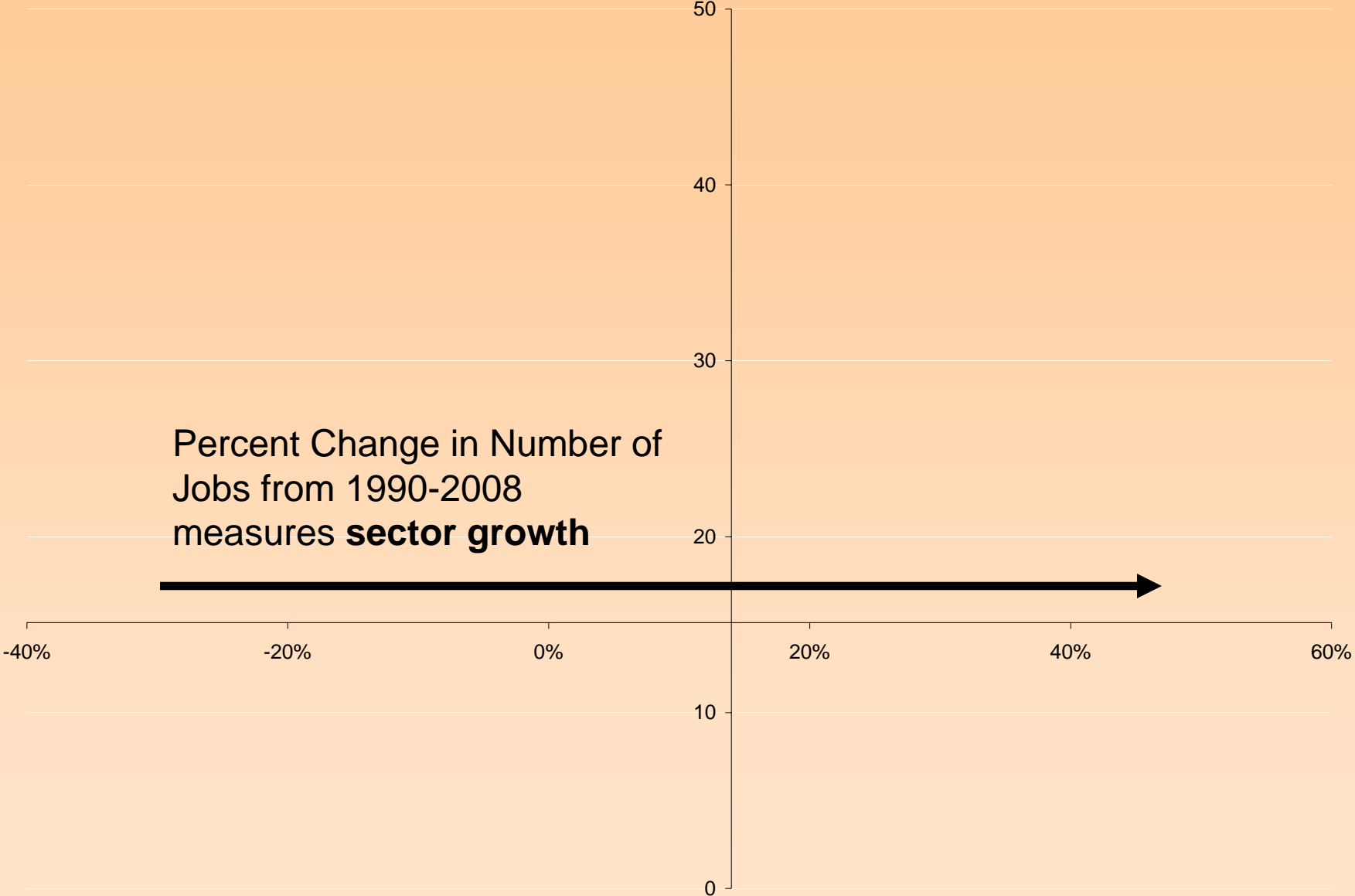


Job Concentration by Sector

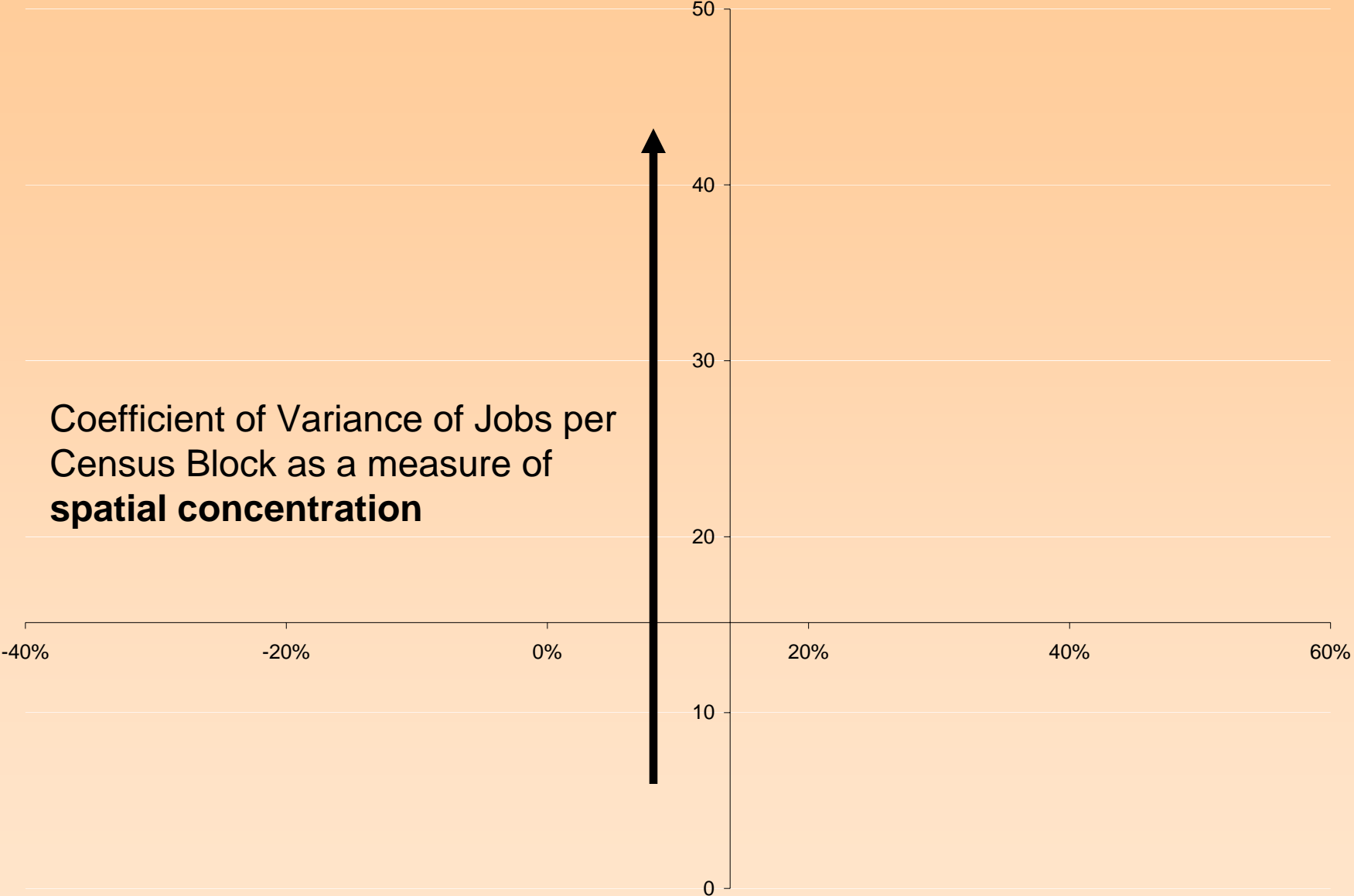
Pairing industry sector employment change and the location of jobs provides information on where change is occurring throughout the Bay Area.

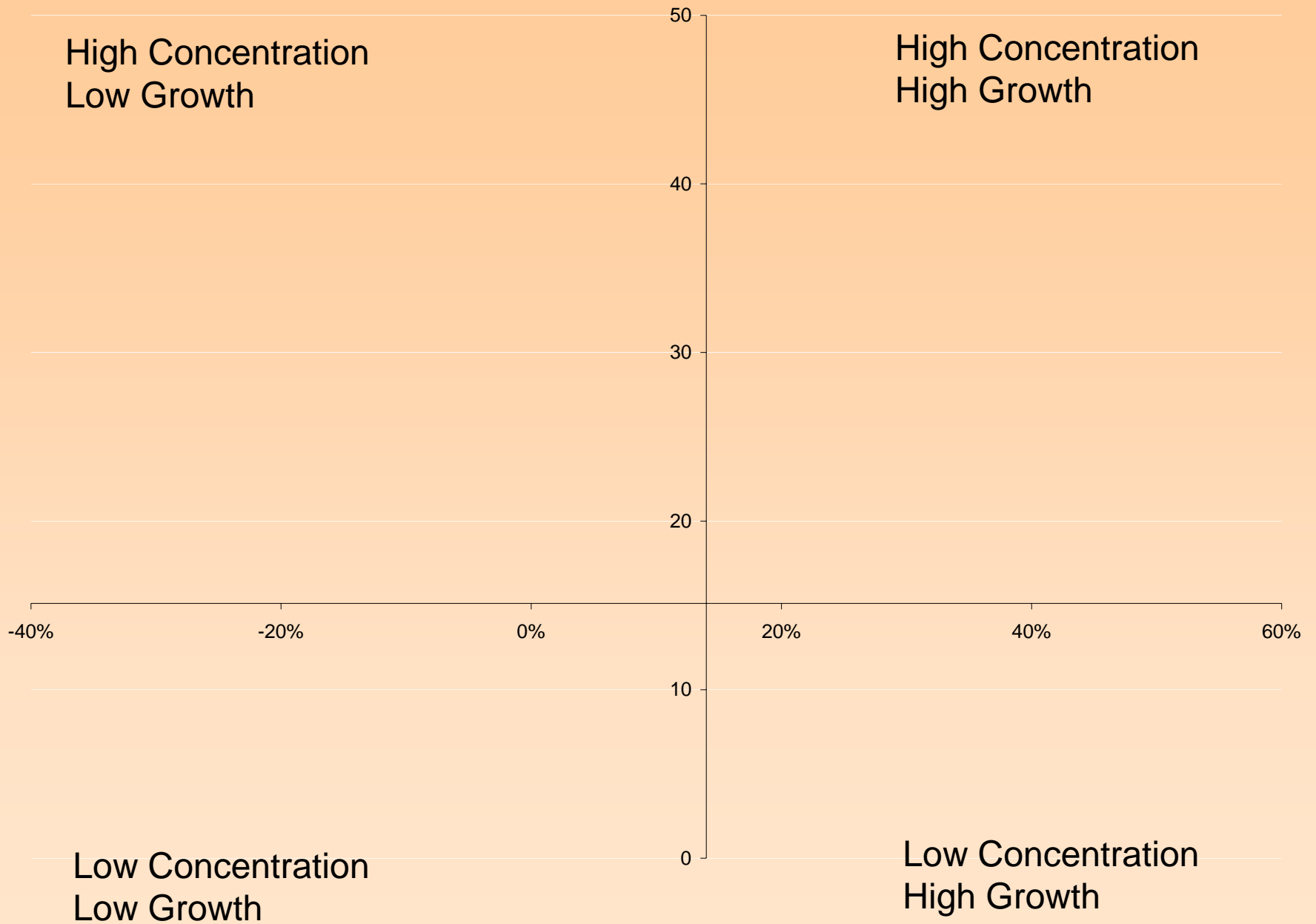


Percent Change in Number of
Jobs from 1990-2008
measures **sector growth**

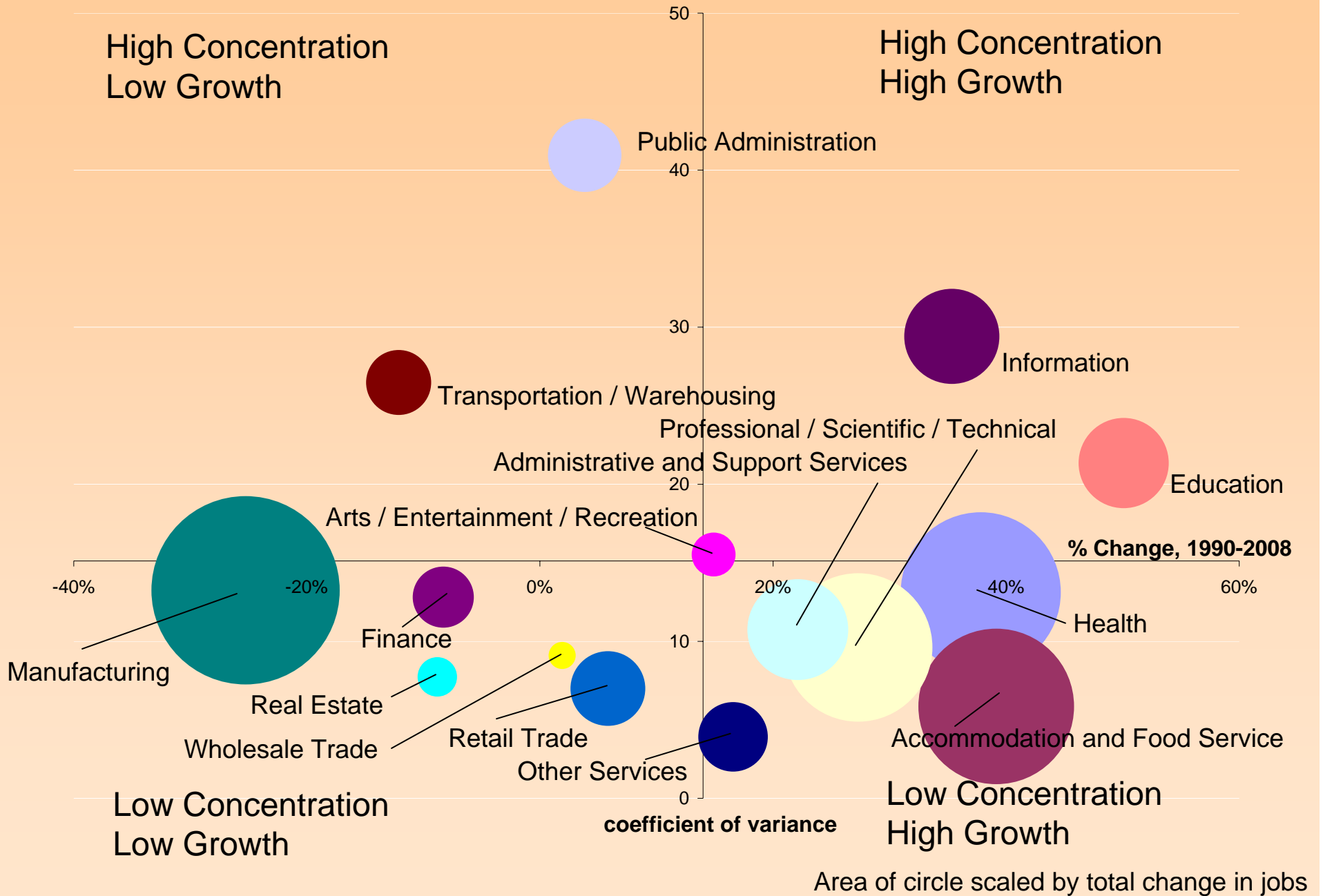


Coefficient of Variance of Jobs per
Census Block as a measure of
spatial concentration

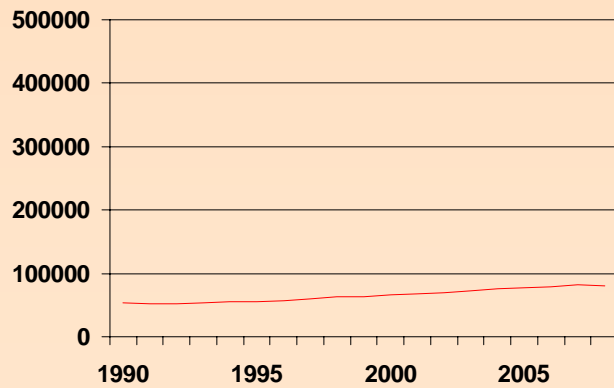
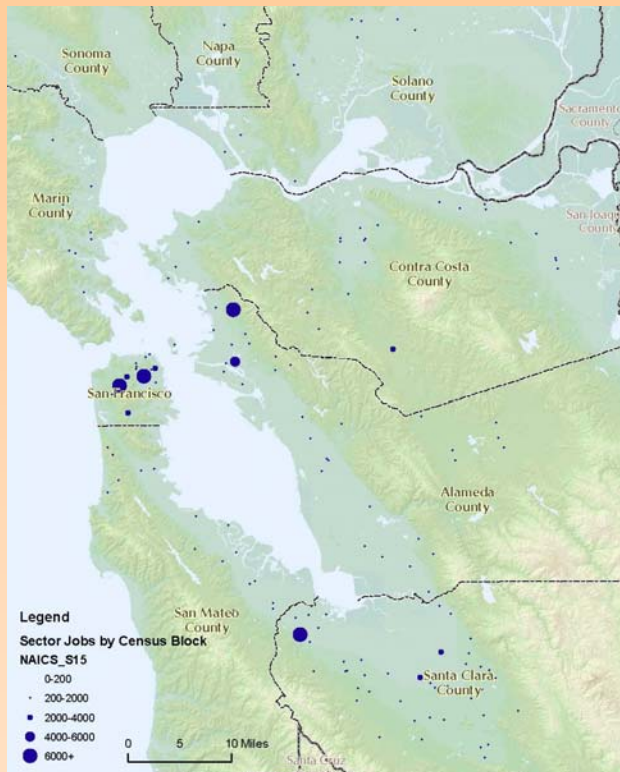




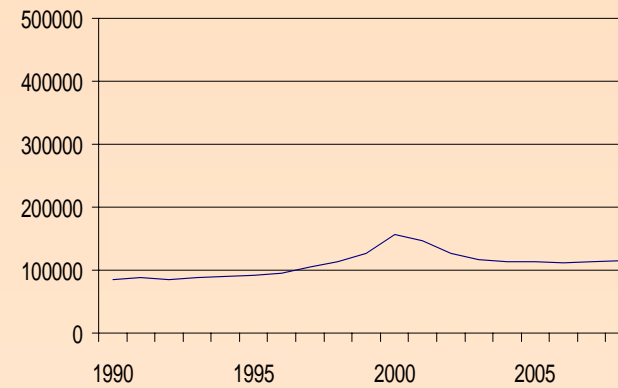
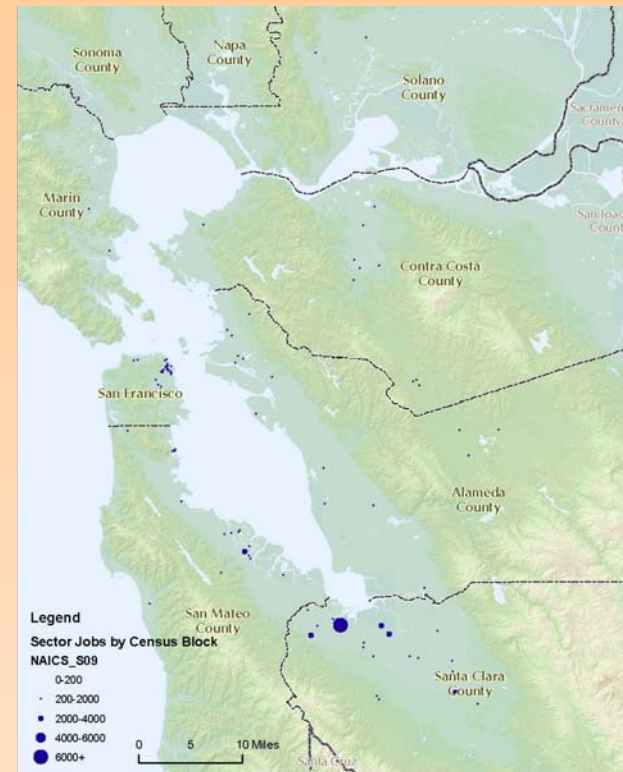
Sector Growth and Spatial Concentration



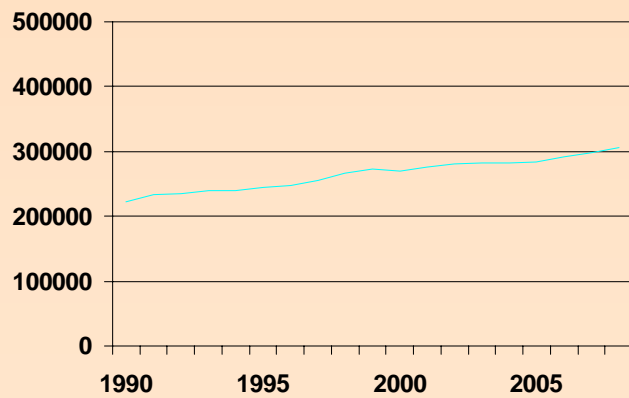
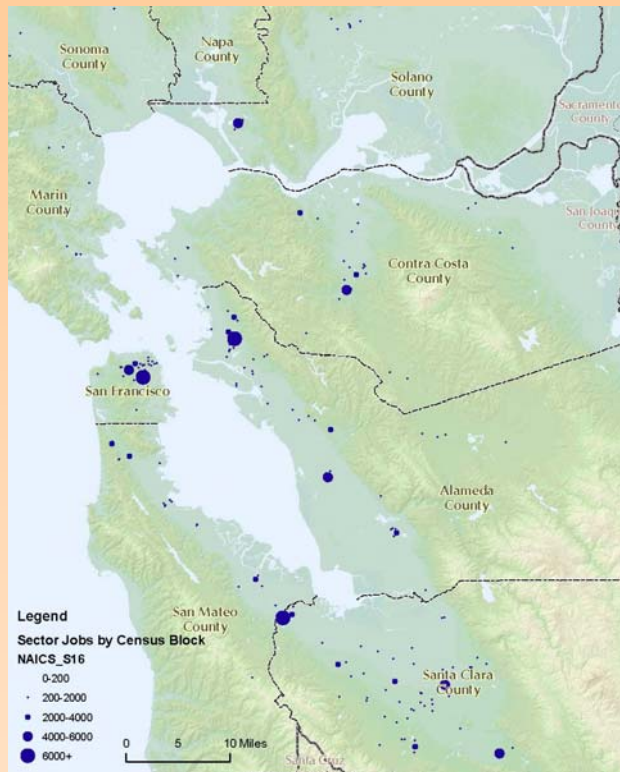
Educational Services



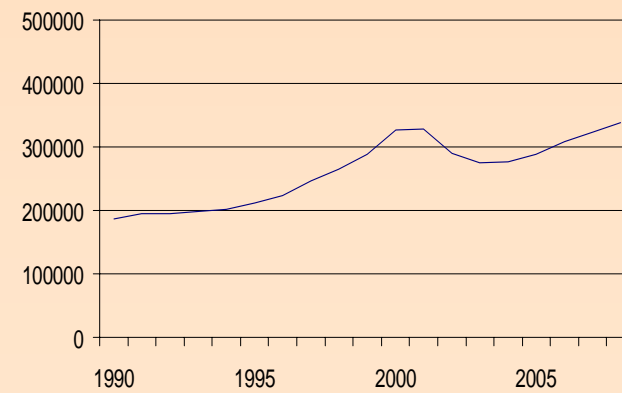
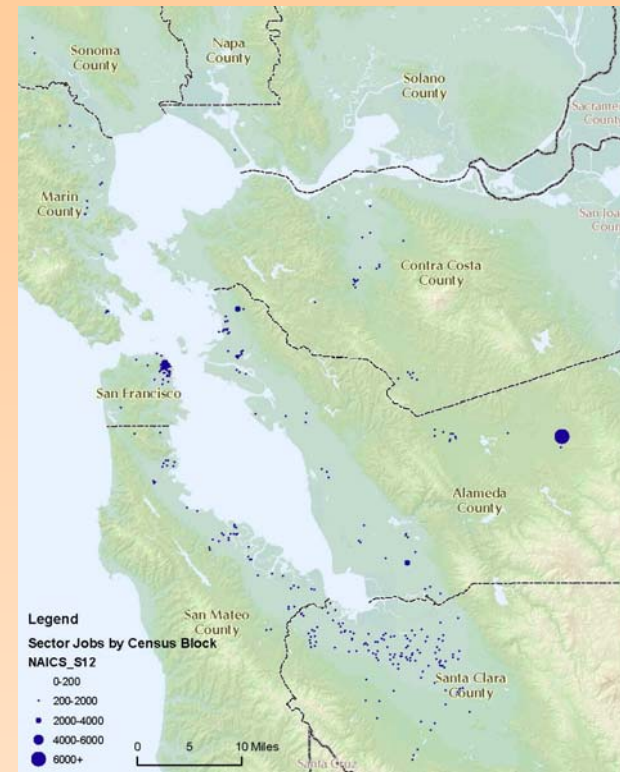
Information



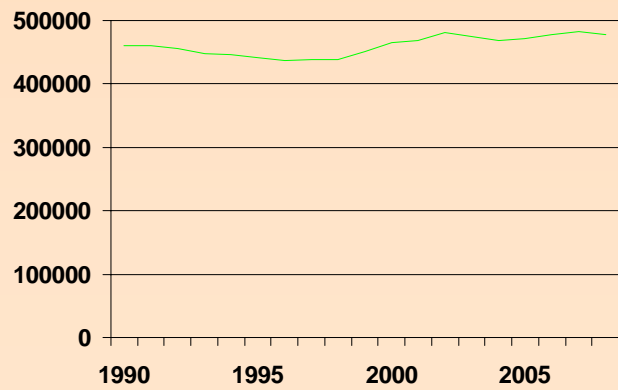
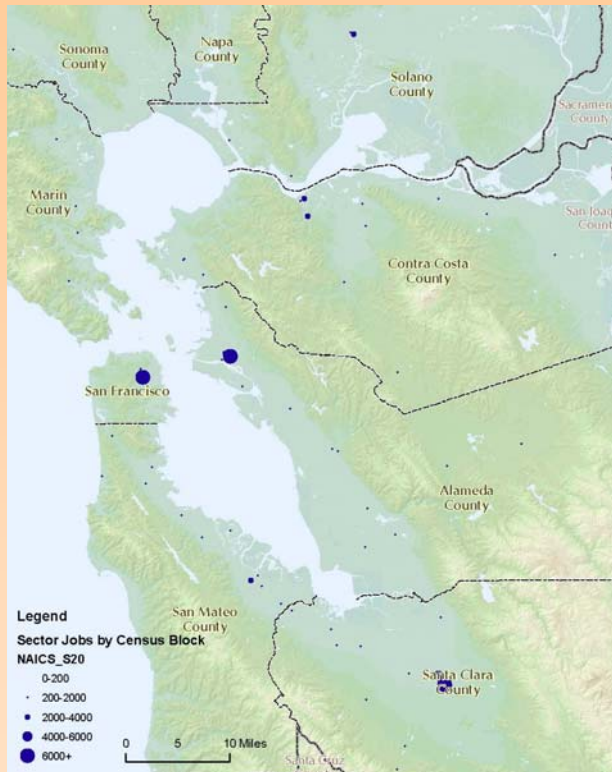
Health Care and Social Assistance



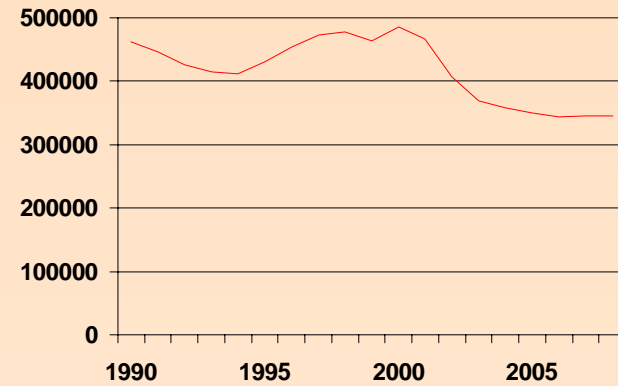
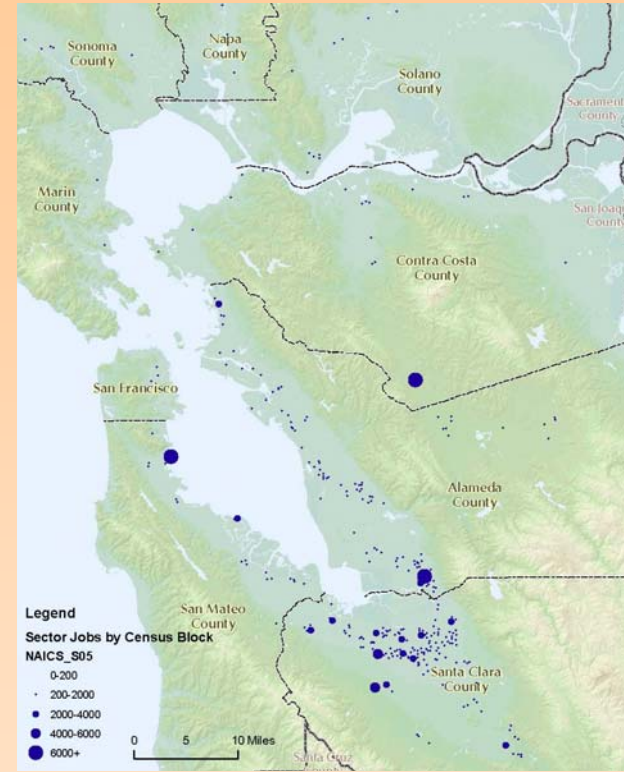
Professional, Scientific, Technical



Public Administration



Manufacturing

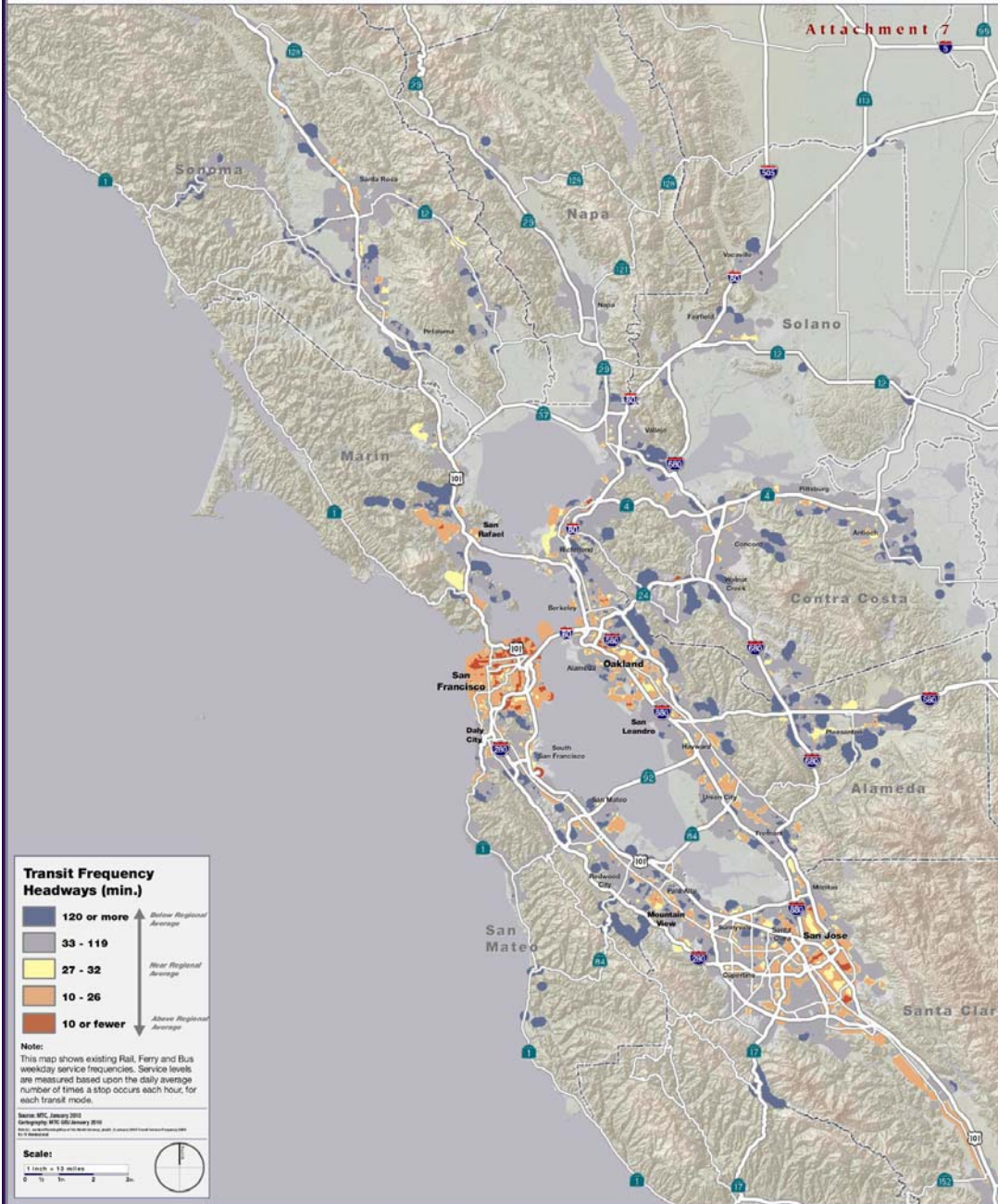


Transit Service Frequency 2009

Metropolitan Transportation Commission
Planning, Financing and Coordinating
Transportation for the nine-county
San Francisco Bay Area

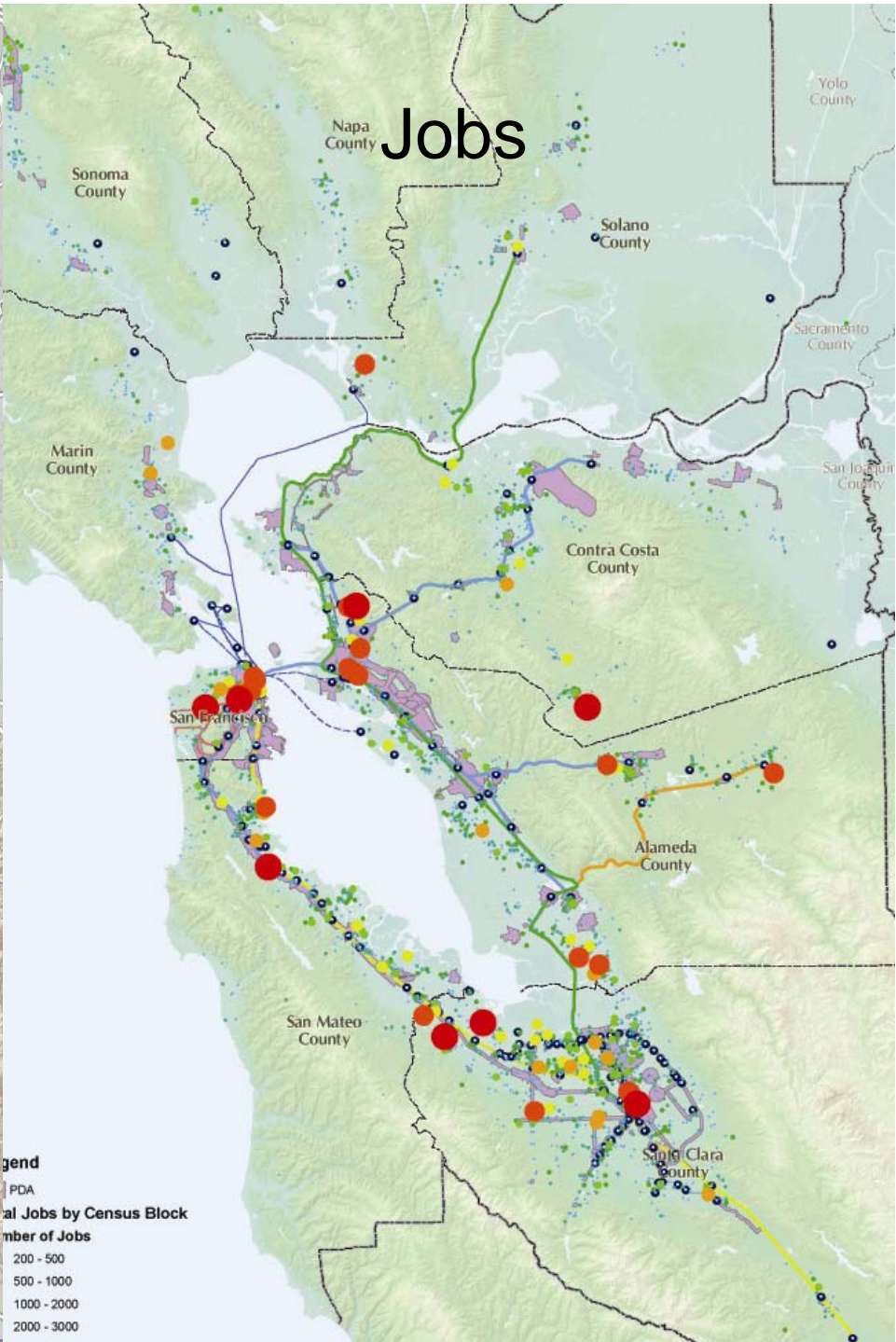
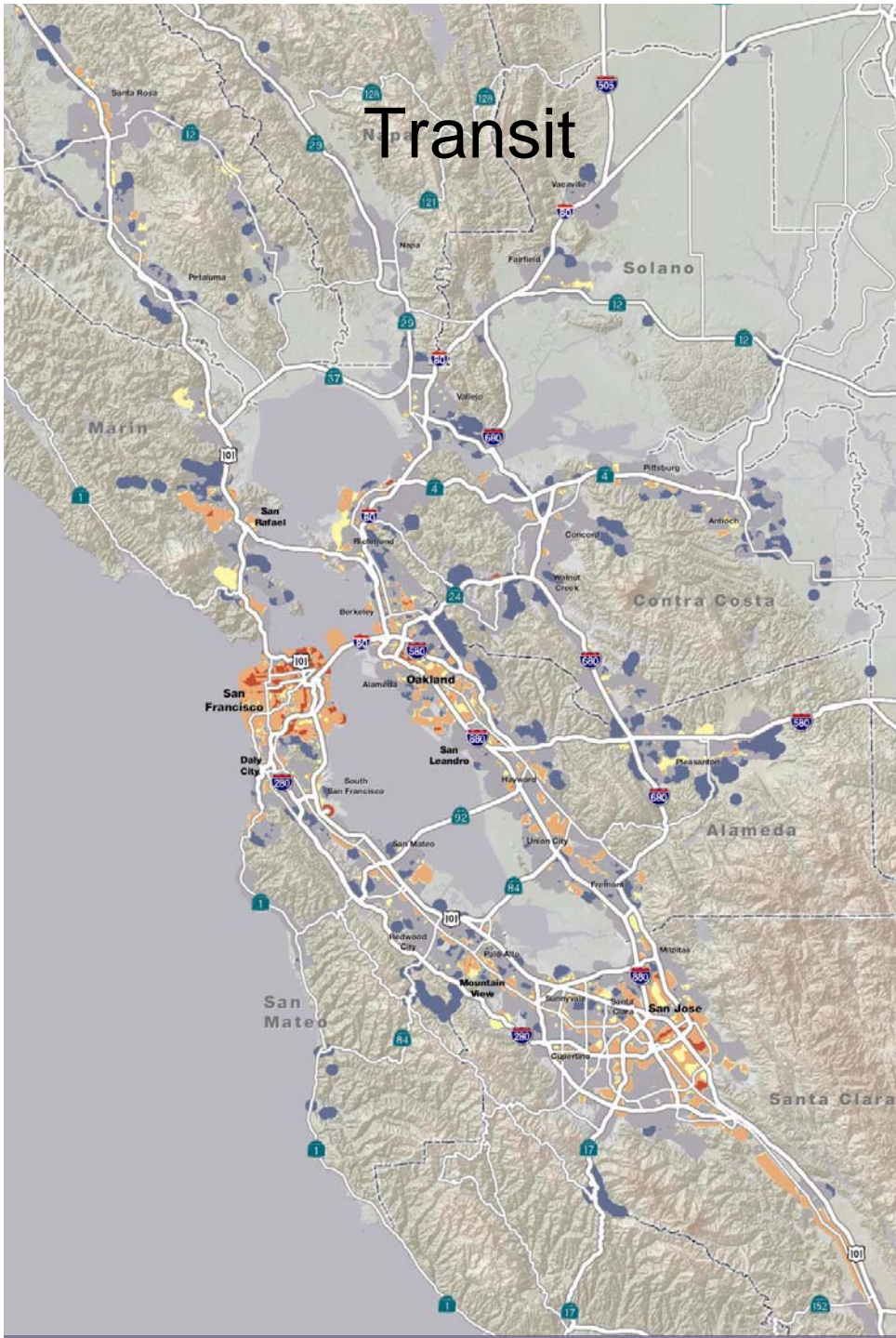
Research and Demographic Unit

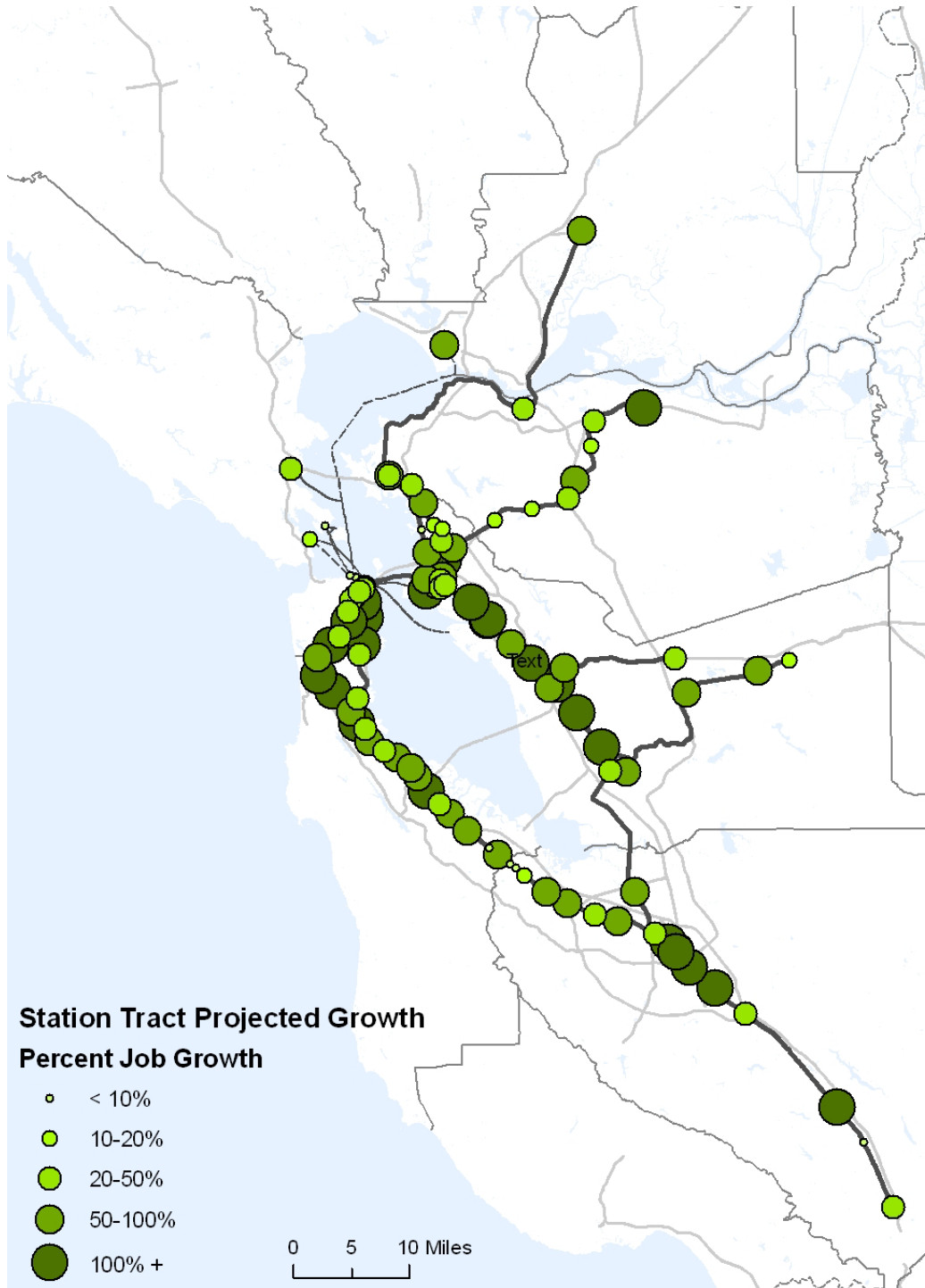
Geographic Information Systems Unit



But how do these jobs relate to transit service?

Commute VMT is a function of how well transit serves employment centers as well as how well local housing options match local jobs.

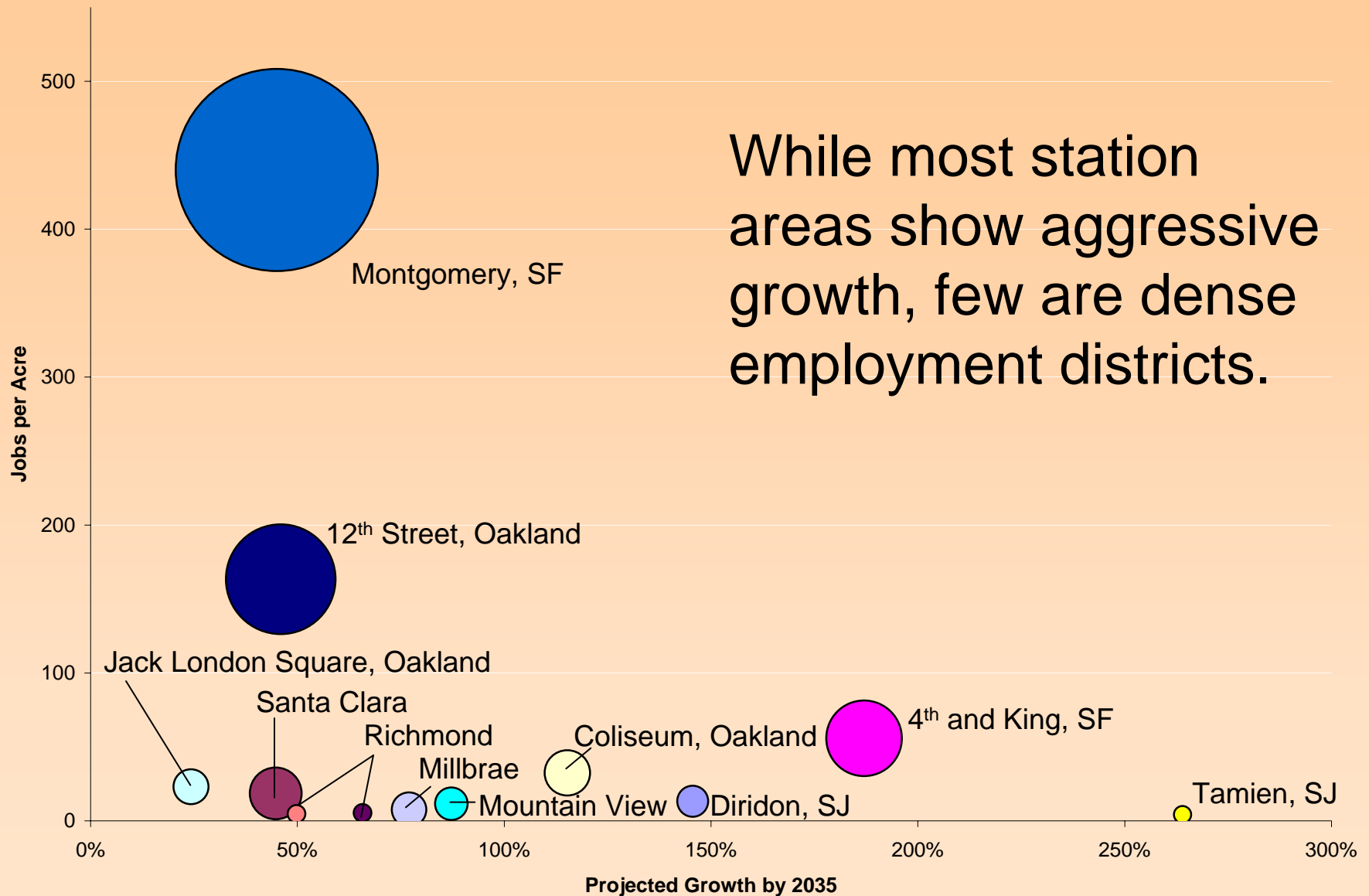




Job Growth Near Fixed Rail Stations

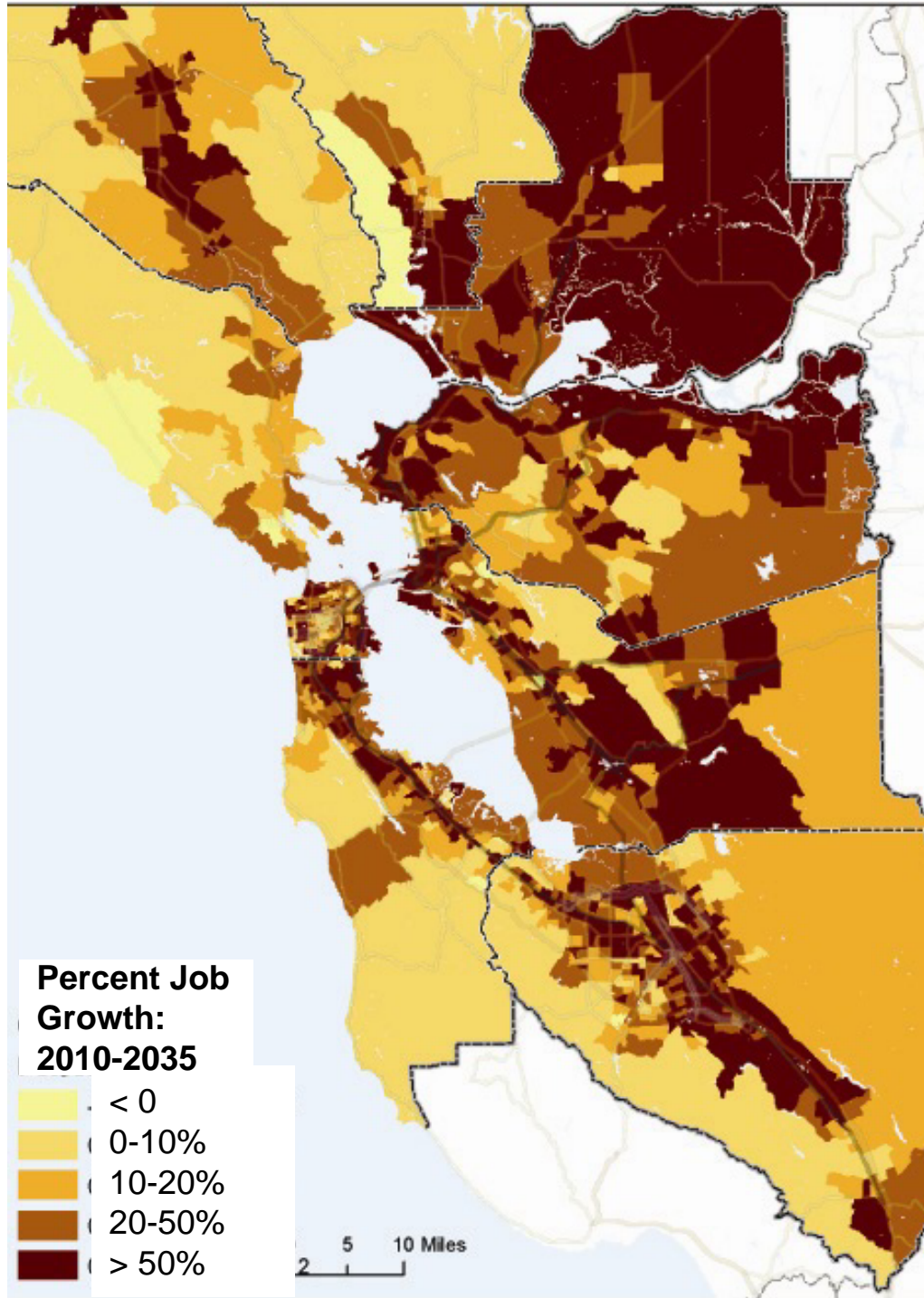
Most existing fixed-rail station areas are projected to grow substantially by 2035.

Station Area Employment Density and Growth



While most station areas show aggressive growth, few are dense employment districts.

Job density for blocks within a quarter mile of the multimodal station; projected growth for station tract. Area of circle scaled by total jobs.



Regional Job Growth

Projections 2009 also shows aggressive job growth in less transit-served areas by 2035.