

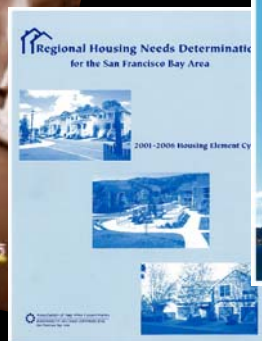


Regional Performance Targets & Projections 2009

Paul Fassinger, Research Director
Christy Riviere, Senior Planner
Regional Planning Committee, February 6, 2008

Projections?

“Oh yeah, sure...whatever.”



The Elephant!



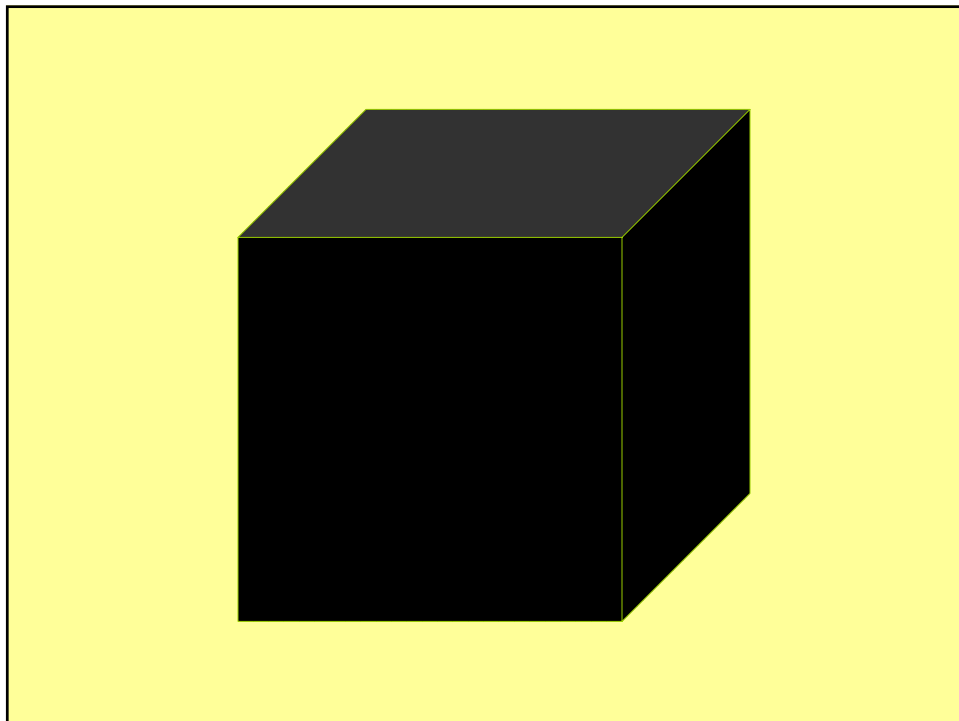
Wake up...!



OK, so wait, policy-based what?

"You always admire what you really don't understand."

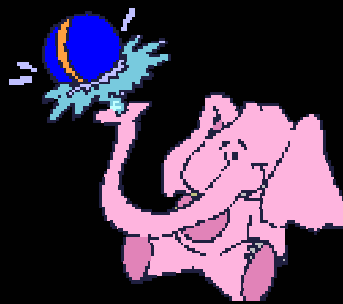
- Blaise Pascal, 17th Century mathematician turned philosopher



MTC Took the First Leap



Are we ready...?



Why should the transportation guys have all the fun?

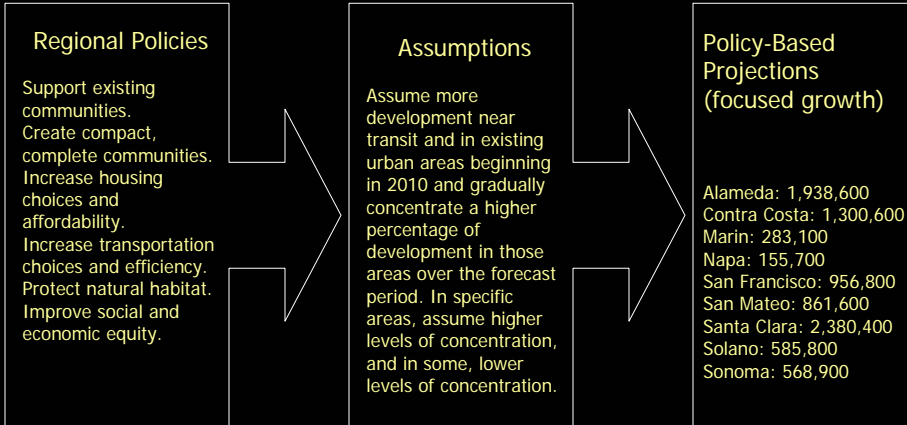


Adopted Regional Policies



- Support existing communities.
- Create compact, complete communities.
- Increase housing choices and affordability.
- Increase transportation choices and efficiency.
- Protect the environment.
- Improve social and economic equity.

How we reach for those stars...

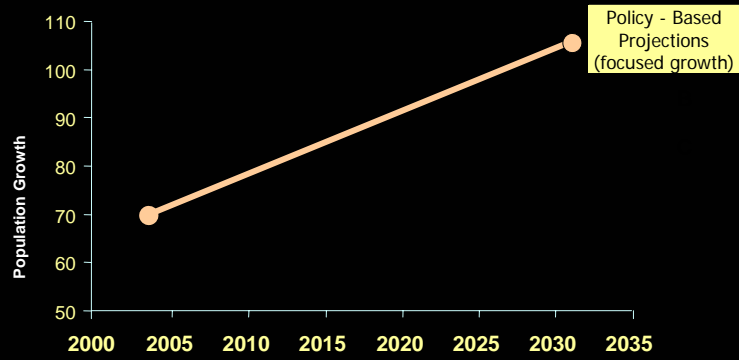


And then there's RHNA



It's better for the environment....

Policy: Protect the Environment



Will different numbers help?



Trust us, we'll get it right...?

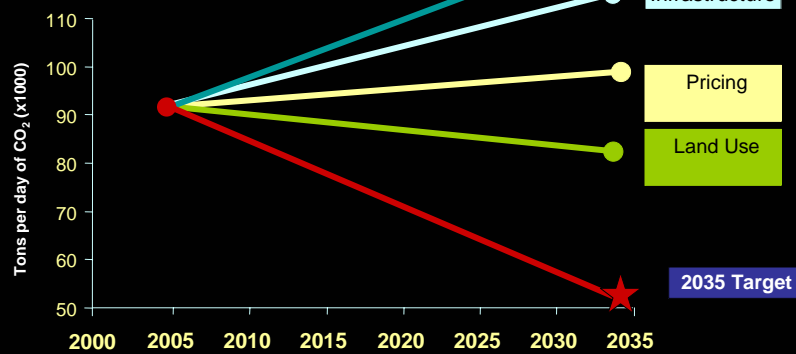


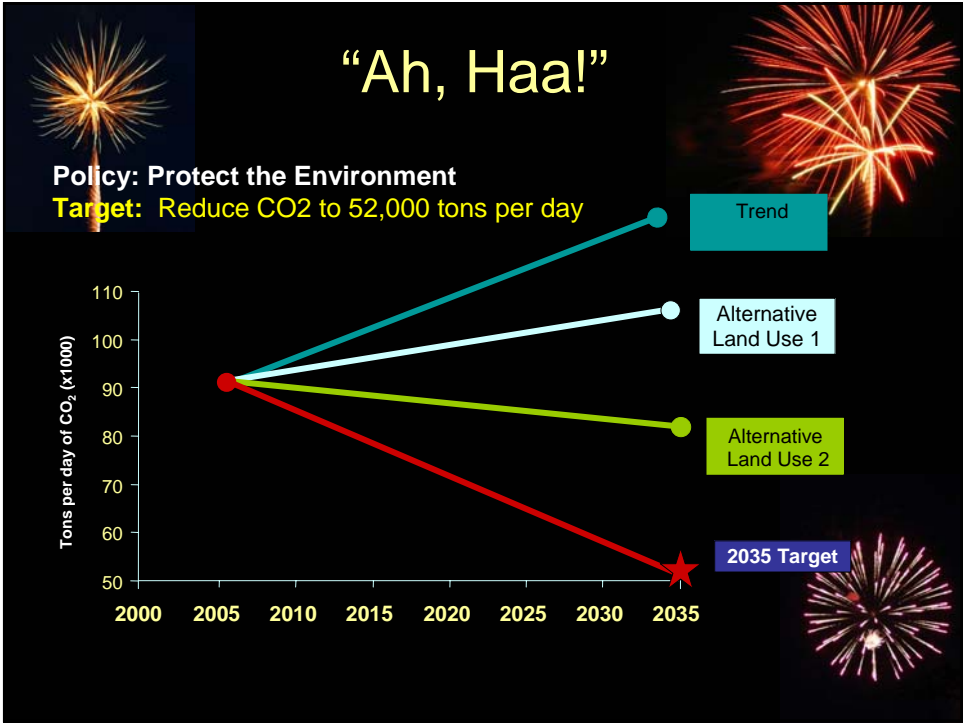
“Ah, ha! Uh, oh.”



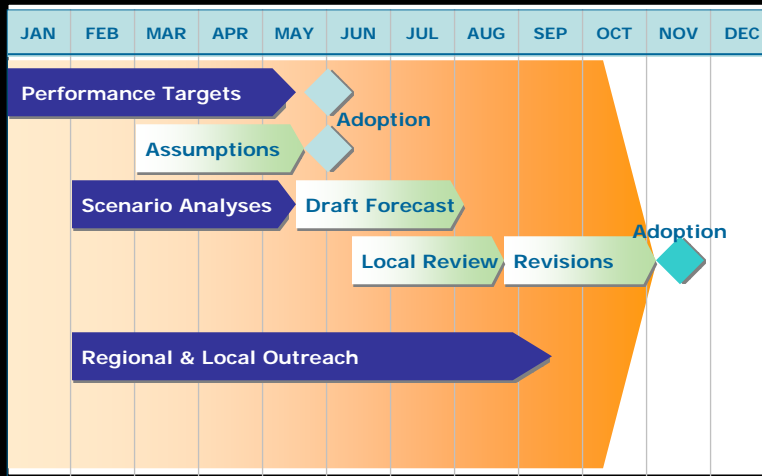
Policy: Protect the Environment

Target: Reduce CO₂ to 52,000 tons per day





The Calendar



So, what now?

- Bring concept to local and regional entities.
- Refine performance targets.
- Develop land use assumptions.
- Run sensitivity analysis.
- Review results.
- Embrace the elephant.



